

PRISMA RT-NETWORK BELGIUM

INTERIM REPORT

COLLEGE OF RADIOTHERAPISTS-ONCOLOGISTS

Alain Dehaene - adheco

Meeting Heads of department Radiotherapy

01-02-2013

Site Lamot, Mechelen

Global objectives (1)

- Visit all Belgian RT centers individually
 - recognize local needs
 - Local inventory
- Start up (as much as possible) centers
- Transferring the philosophy of the PRISMA-RT Network
 - national objective
 - global objective
- Explain confidentiality & security of the data
- Answer questions
- Standardize reporting form / definitions

Global objectives (2)

- Expanding form to local needs (if needed)
- Train all PRISMA-RT member centers in PRISMA methodology
 - Focus on minimum 2 analysts per center
- Familiarizing with the reporting system / Quality Management System
- Start up a national team of experts (multidisciplinary)
- Set 'Golden Standard' > manage inter-rater variability
- Planning Workshops PRISMA methodology > continuous training
- Training Application managers > own management and expanding use
Quality Platform

Principles and methodology (1)

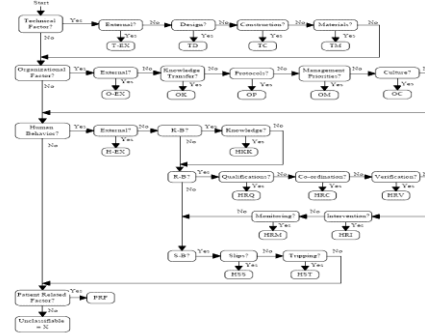
Reporting platform



Other reporting systems

Methodology

PRISMA



Network

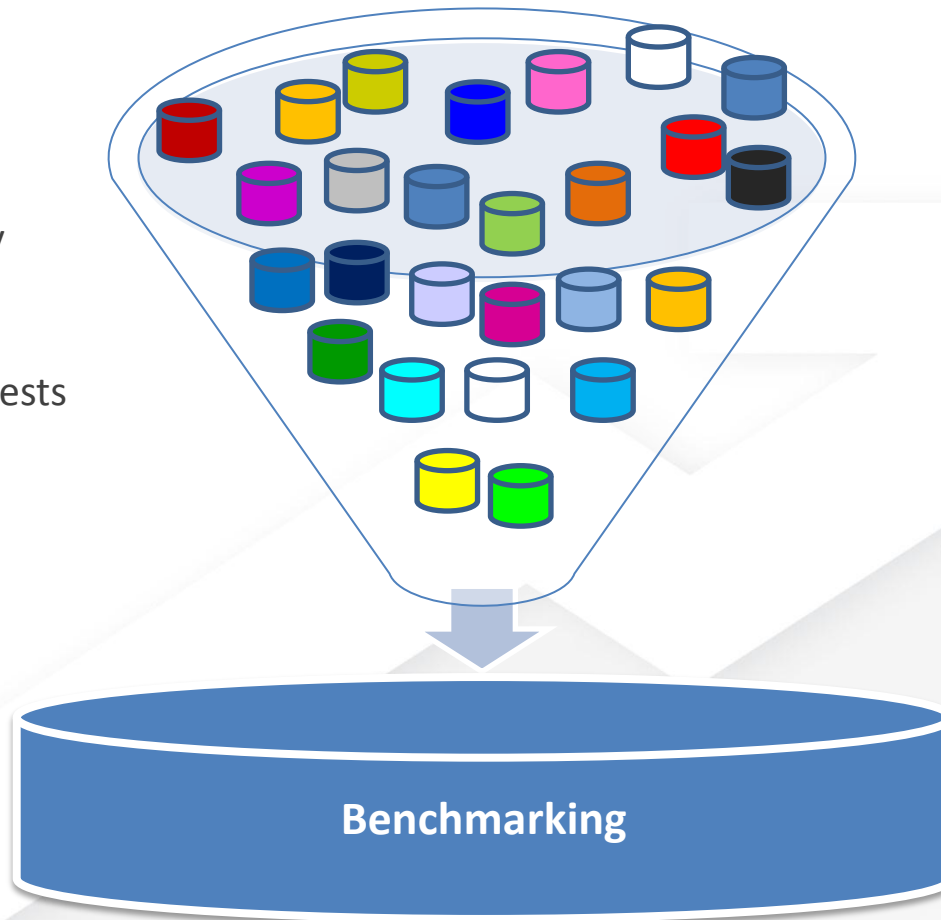


We need uniform data to compare one another

Principles and methodology (2)

Data 25 centers:

- PRISMA methodology
- ECM classification
- Context variables
- Inter rater reliability tests

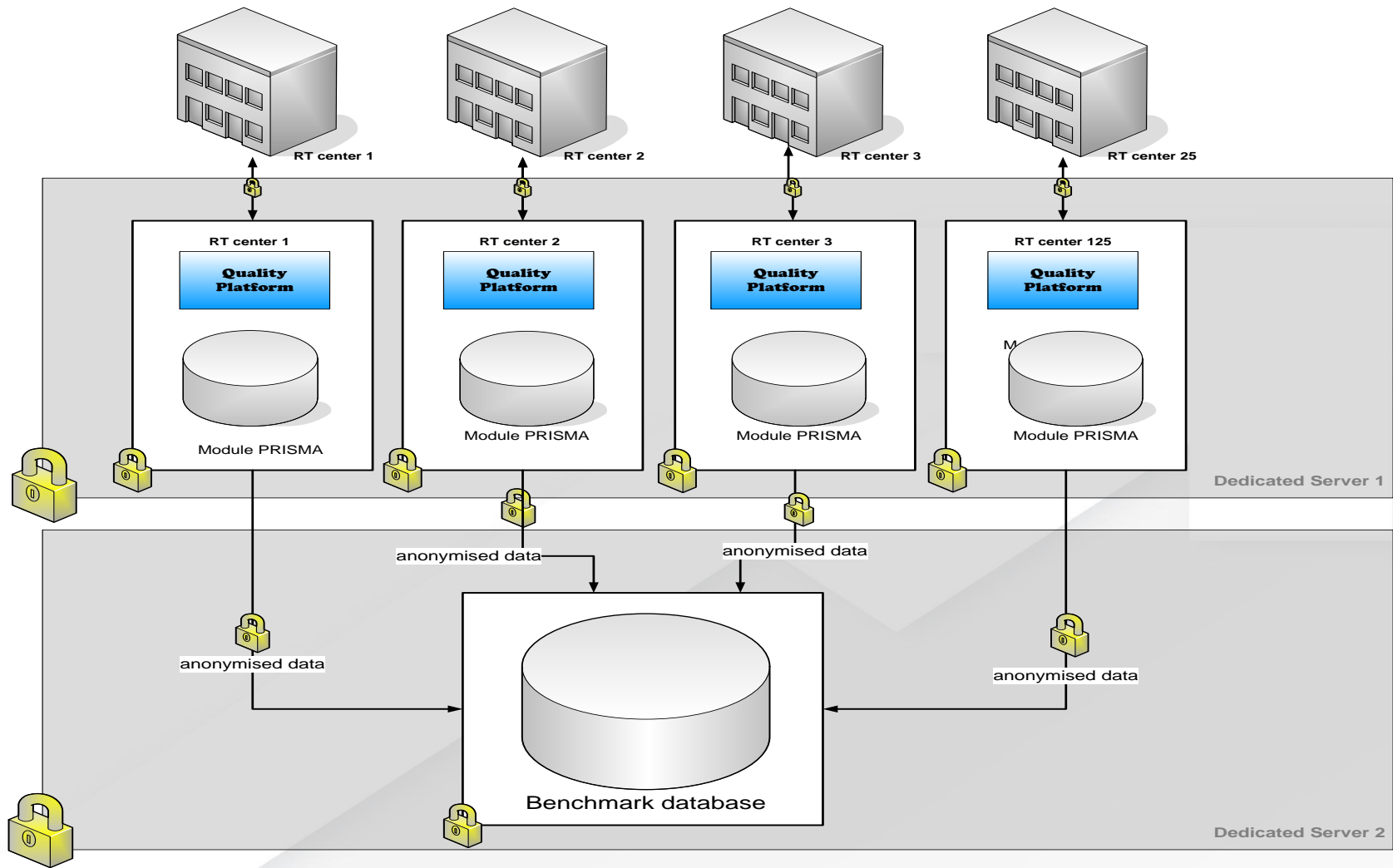


Through benchmarking radiotherapy centers can learn form each other

Principles and methodology (3)

- Reporting system
 - By preference through cloud platform
 - Nevertheless independent of institutional reporting system
 - Interfaces will be developed, no incompatibilities
- Methodology
 - PRISMA
 - Eindhoven Classification Model (ECM)
 - Uniform context variables
 - Inter rater reliability tests
- Network
 - Individual databases, separated, locally managed
 - Exchange with benchmark is voluntary
 - 1 Collective database, managed by the College

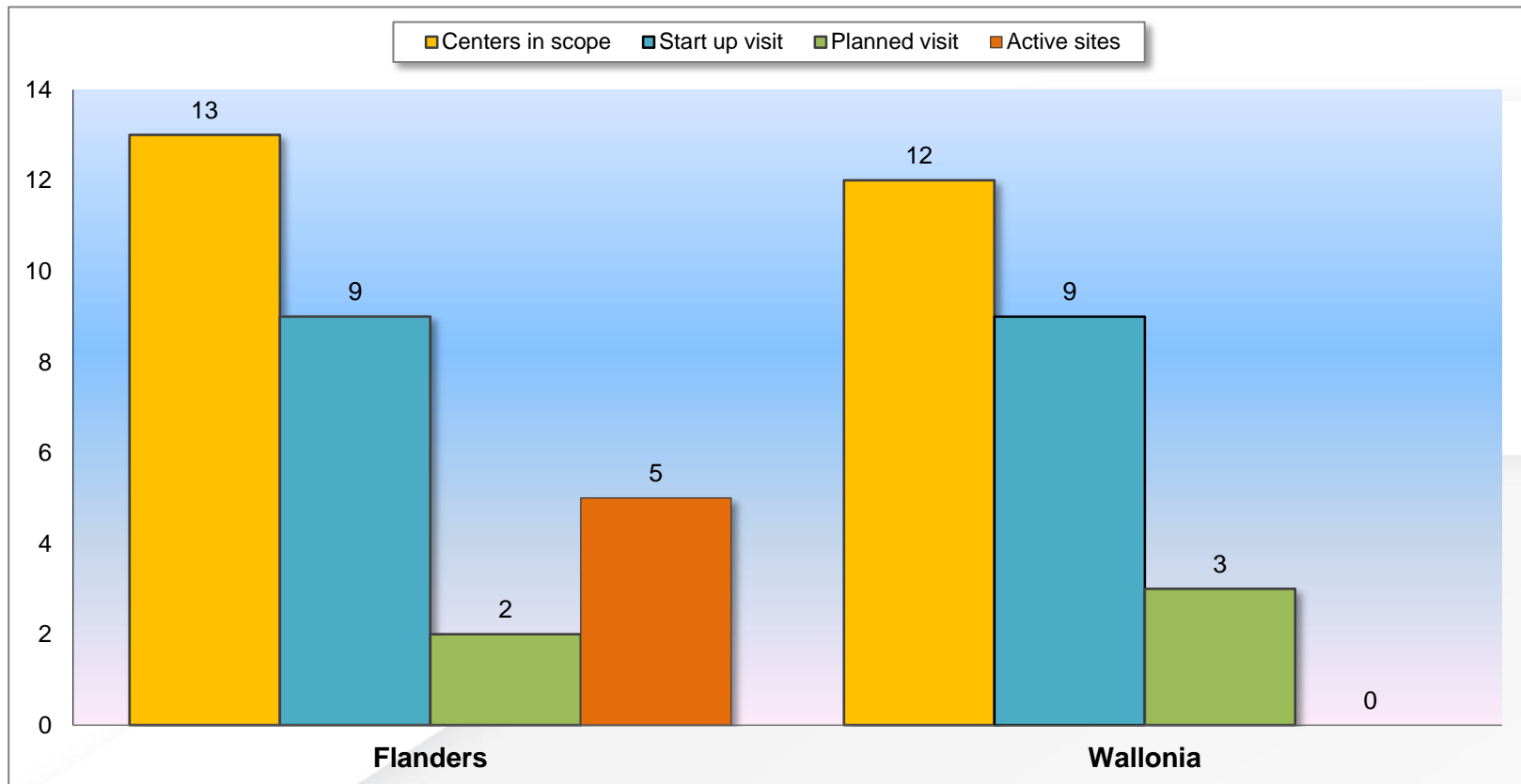
Benchmark Structure – Confidentiality data



**Individual data are shielded from each other
No input of personal data in the benchmark environment**

Status PRISMA-RT Network BE - Jan 2013

Progression activation RT centers (1)



Remark: 1 center has refused

Status PRISMA-RT Network BE Q1 2013

Progression activation RT centers (2)

- Final centers in scope

NL	FR
12	12
1 center refused (O.L.V. Aalst)	

Status PRISMA-RT Network BE Q1 2013

Progression activation RT centers (3)

- Start up visit conducted

NL (9)	FR (9)
UZ Leuven	UCL St. Luc
UZ Brussel	Europaziekenhuizen
GvA (Wilrijk)	Hôpital de Jolimont
ZNA Middelheim	Institut Bordet Bxl
AZ St. Maarten – Duffel	Clinique St. Jean Bxl
AZ St. Lucas Gent	Hôpital St. Joseph Gilly
LOC Hasselt	Clinique Louis Caty Baudour
AZ Turnhout	CHU Charleroi
HH Roeselare-Menen	CMSE Namur

Status PRISMA-RT Network BE Q1 2013

Progression activation RT centers (4)

- Planned visit (february 2013)

NL	FR
UZ Gent	C.H.I.R.E.C.
AZ Groeninge	C.H.U. Sart Tilman
	C.H. Peltzer la Tourelle Verviers

- Frozen status (start date unknown)

Due to on hold negotiated procedure about institutional reporting system

NL	FR
AZ St. Jan Brugge	-

Status PRISMA-RT Network BE Q1 2013

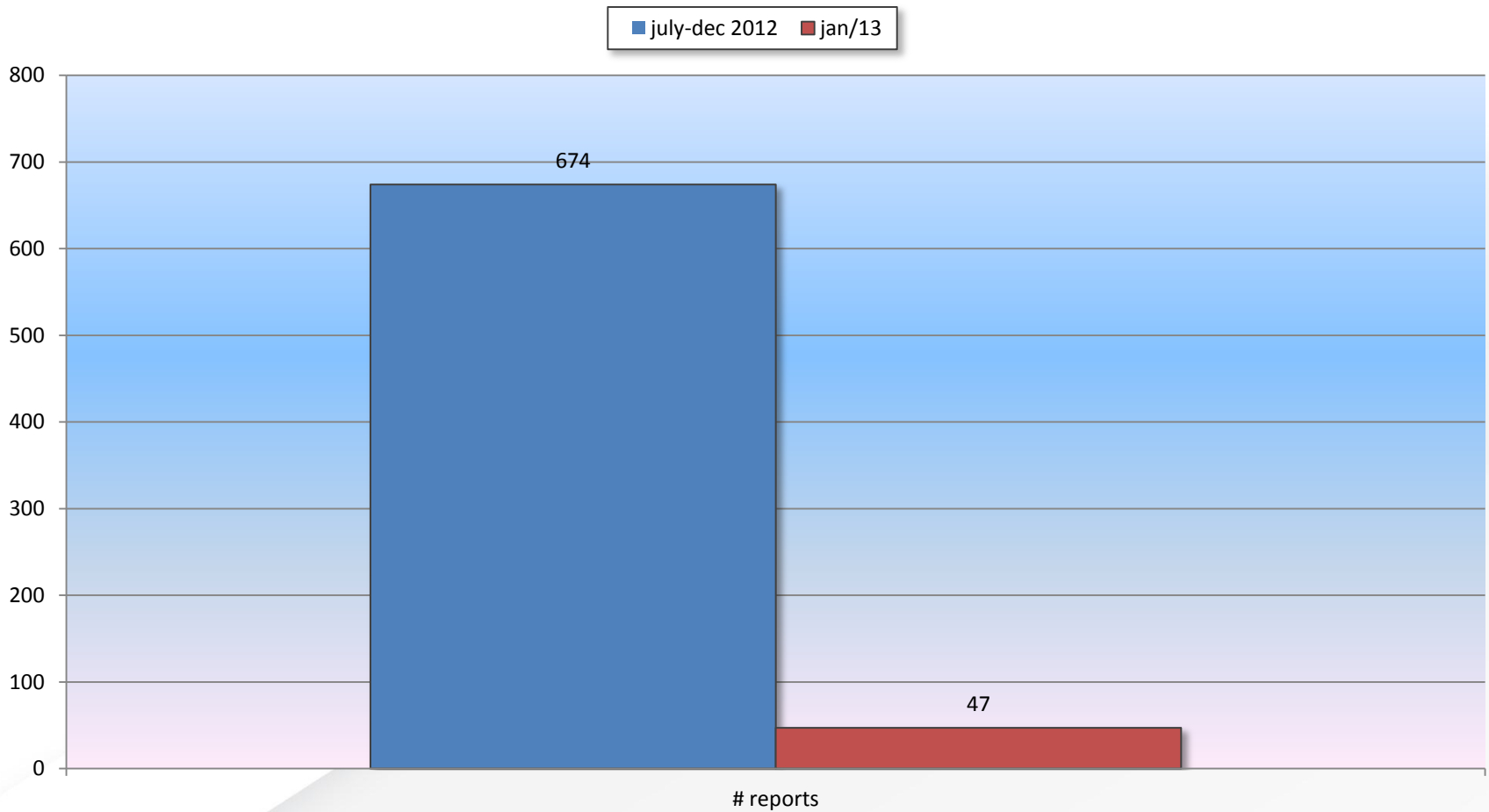
Progression activation RT centers (5)

- Active centers 2012 (actual reporting in cloud / institutional reporting system)

NL	FR
UZ Brussel	-
ZNA Middelheim	
AZ St. Lucas Gent	
UZ Leuven	
HH Roeselare-Menen	

Status PRISMA-RT Network BE Jan 2013

Progression number reports active centers



Status PRISMA-RT Network BE Q1 2013

Training PRISMA (1)

So far 22 centers and 53 analysts have been trained in PRISMA (first intro session)

Group 1 (NL) Leuven 06/2012	Group 2 (NL) Brussels 12/2012	Group 3 (FR) Brussels 12/2012	Group 4 (FR) Brussels 01/2013
UZ Brussel	AZ Turnhout	UCL Saint-Luc Bxl	Clinique St. Jean Bxl
UZ Leuven	LOC Jessa ZH Hasselt	CHU - Sart Tilman Liège	GHdC - Hôpital St. Joseph Gilly
ZNA Middelheim	Heilig Hart Roeselare-Menen	CMSE Namur / Mouscron	CHIREC Uccle
AZ Sint-Jan Brugge	Europaziekenhuizen	CHU Charleroi	EpiCURA (Cl. Louis Caty) Baudour
AZ Sint-Lucas Gent	AZ Groeninge	CH Hôpital Jolimont-Lobbes Haint Saint Paul	Institut Bordet Bxl
AZ Sint-Augustinus Wilrijk	AZ St. Maarten Duffel		

Status PRISMA-RT Network BE Q1 2013

Training PRISMA (2) – General session

- First intro session NL (group 1)

Leuven 06/2012	Participant	Responsability
UZ Brussel	Dirk Verellen	Physician
UZ Leuven	Jan Verstraete Sofie Isebaert	Dosimetrist Research assistant
AZ Middelheim (ZNA)	Katrien Heleu Ann Coelmont	Quality Manager RT Physician
AZ Sint-Jan Brugge	Jeanne Engels	Physician
AZ Sint-Lucas Gent	Pieterneel Thysebaert Nathalie Deman	Responsible RT Projects Physician
AZ Sint-Augustinus Wilrijk	Myke Coen Bop Craen Piet Stevens	Quality Manager RT Nursing staff RT Physician

Status PRISMA-RT Network BE Q1 2013

Training PRISMA (3) – General session

- First intro session NL (group 2)

Brussels 12/2012	Participant	Responsability
AZ Turnhout	Sabine Niessen	Quality Manager RT
Jessa ZH Hasselt	Katrien Spaas Rita Coppers	Quality Manager RT Nursing staff RT
Heilig Hart Roeselare-Menen	Frederik Vanhoutte Dr. Lorenzo Staelens Herlinde Van Hauwaert Els Goemaere	Physician Head of Dpt. Radiotherapy Physician QM Nursing staff RT
Europaziekenhuizen	Alex Rijnders Dr. Dorothee Berben Rita Goubert	Physician Radiotherapist Nursing staff RT
AZ Groeninge	Mia De Baere Vanessa Vandersarren	Nursing staff RT Nursing staff RT
AZ St. Maarten Duffel	Karen Feyen Luc Van Look Karen Brusselmans	Physician Head Nursing RT
UZ Brussel	Marlies Boussaer Peter De Coninck	Quality Manager RT

Status PRISMA-RT Network BE Q1 2013

Training PRISMA (4) – General session

- First intro session FR (group 3)

Brussels 12/2012	Participant	Responsability
UCL St. Luc	Aude Vaandering Nathalie de Patoul	Quality Manager RT Physician
C.H.U. Charleroi	Cindy Derbaix	Quality Manager RT
C.M.S.E. Namur / Mouscron	Laure Salpeteur Katarzyna Basta Lidvine Parez	Quality Manager RT Quality Manager RT Nursing staff RT
C.H. Jolimont-Lobbes	Dr. Yannick Neybuch Gauthier Coussement	Radiotherapist Physician
C.H.U. Sart Tilman	Deniz Boga	Quality Manager RT

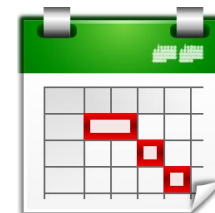
Status PRISMA-RT Network BE Q1 2013

Training PRISMA (5) – General session

- Second intro session FR (group 4)

Brussels 01/2013	Participant	Responsability
C.H.I.R.E.C. Cl. Edith Cavell	Odile Tonet Dr. Pauline Gastelbaum Sylvie Denis Michel Hamal	Quality Manager Radiotherapist Head Nursing staff RT Physician
G.H. de Charleroi (Hôpital St. Joseph)	Pierre Pilette Ismaël El Moncef	Physician Technologist
EpiCURA R.H.MS. Baudour	Anitha Batamuriza- Almasi Dr. Serge Ndam Valérie Jarbinet Charles Ludwik Mohammed Laaboul	Quality Manager RT Radiotherapist Physician Head Nursing staff / Technologist Quality staff
Clinique St. Jean Bxl	Dr. Adinda Baten Michel Van Dijcke Eric Delmoitie Dominique Olivier	Radiotherapist Physician Technicien Nursing Staff RT
Institut J. Bordet Bxl	John Vercauteren	Quality Manager RT

Further action



What?	Who?	Deadline
Activate (planned) centers (6)	Adheco	Q 1 2013
Further integrate definitions into report form / adjustments per center	Adheco	Q 1 2013
Started centers start active reporting	Centers + Adheco	Q 1 2013
Compose Team of Experts	Adheco + centers	Q 2 2013
Formulate / adjust / explain definitions used in the report form	Team of experts	Q 2 2013
First Workshop PRISMA (2 DU + FR sessions)	Adheco	Q 2 2013
Start up Benchmark environment	Adheco + TPSC	Q 3 2013
First analytical results / benchmark results	Adheco + Team of experts	Q 4 2013
Second Workshop PRISMA (2 DU + FR sessions)	Adheco	Q 4 2013
Training Application managers (management by center & expand use as a general Quality Management System in radiotherapy)	Adheco	Q 3 – Q 4 2013 2014